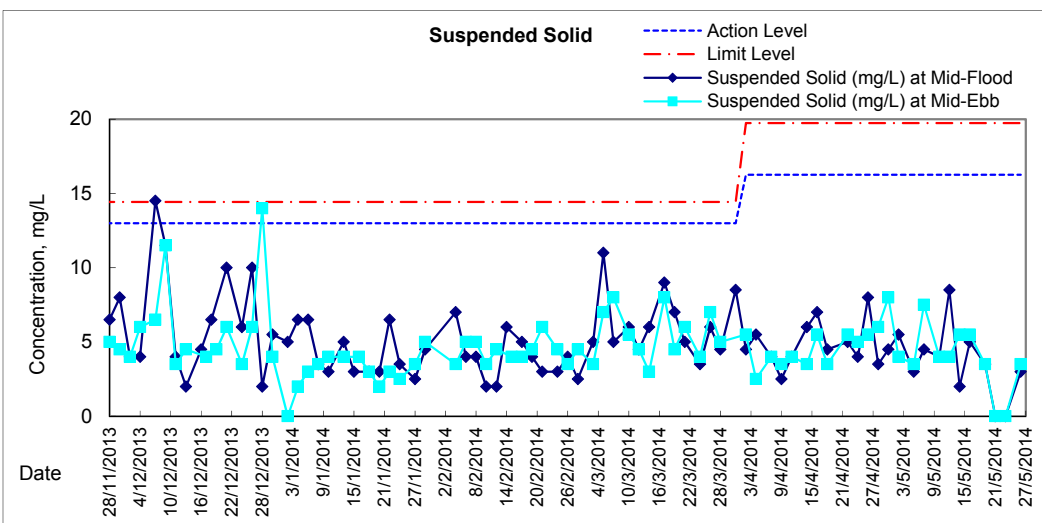
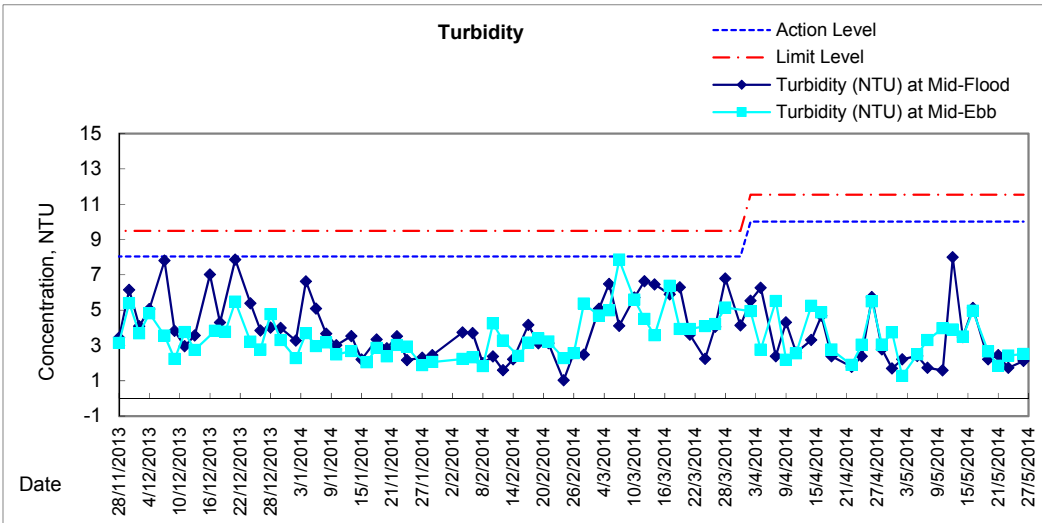
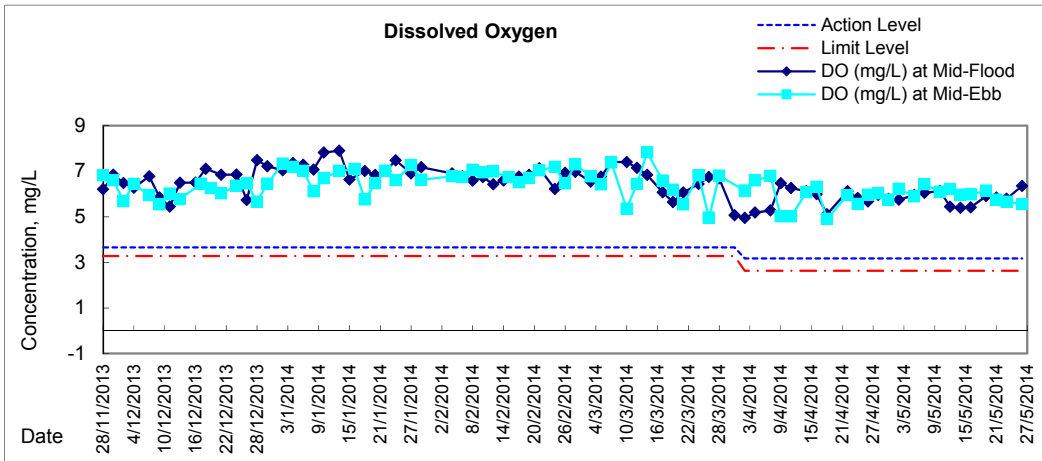


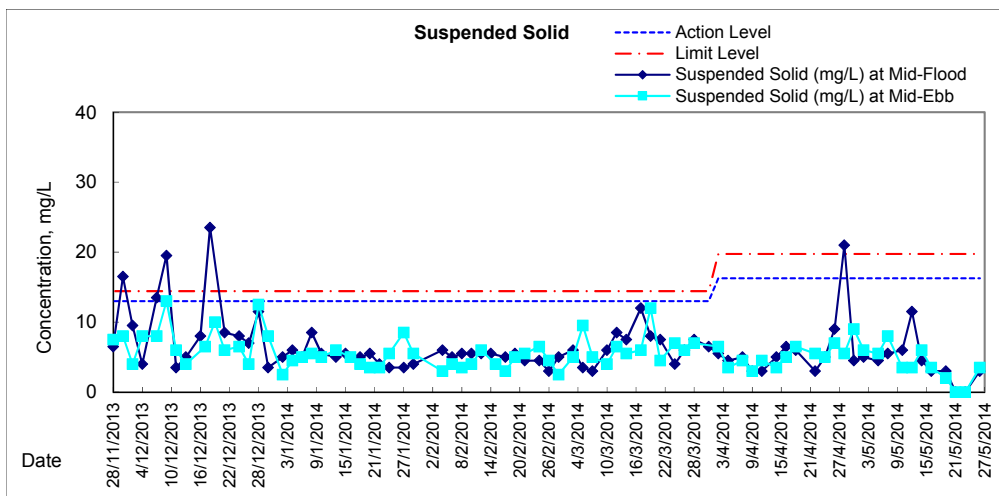
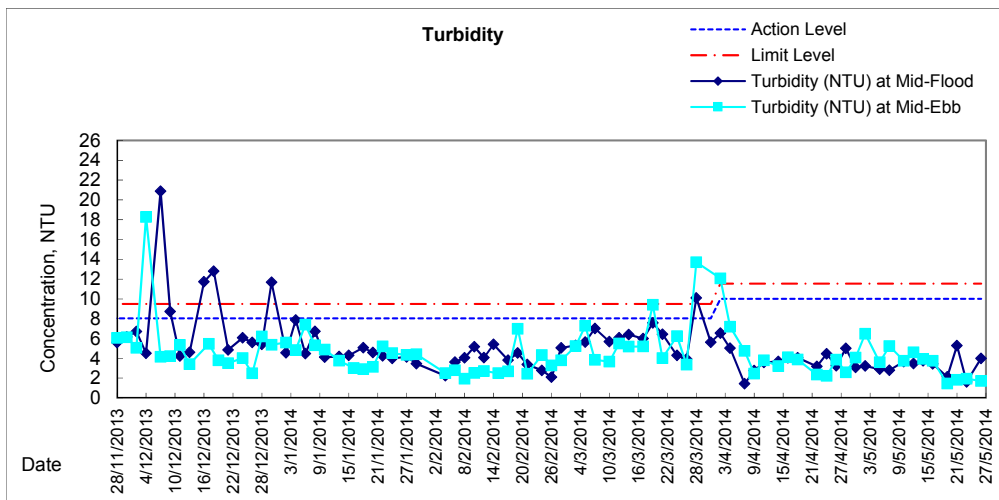
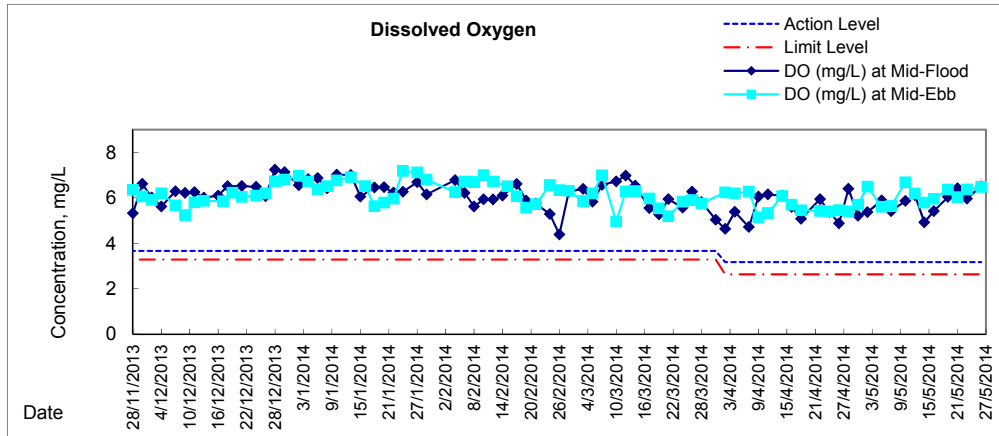


Graphic Presentation of Water Quality Result of WSD17 - Quarry Bay



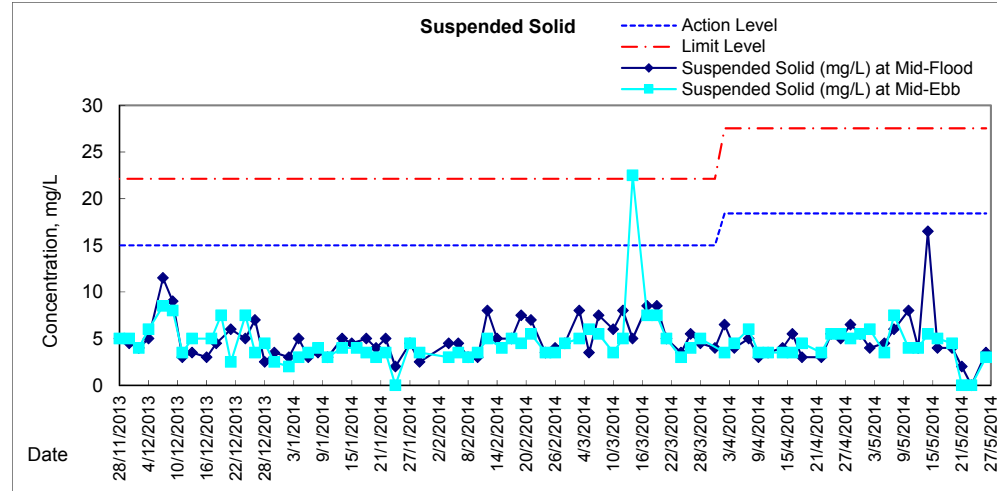
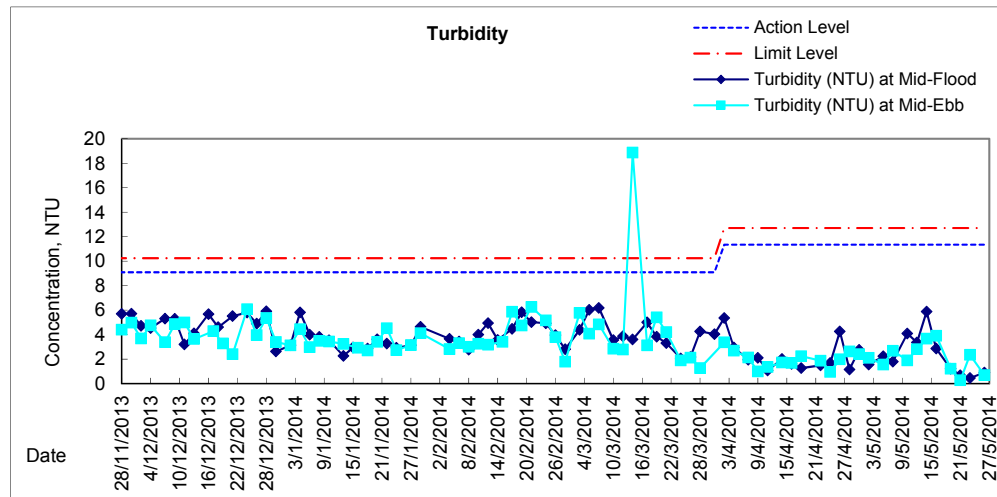
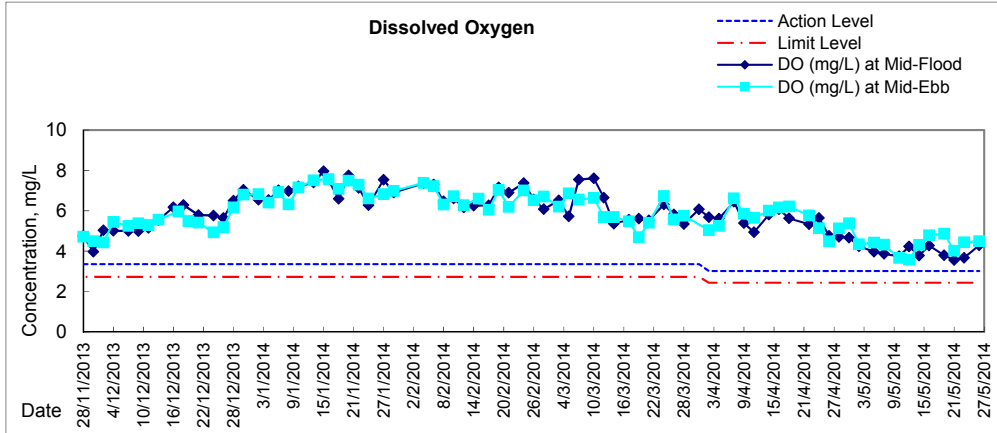


Graphic Presentation of Water Quality Result of WSD19 - Sheung Wan



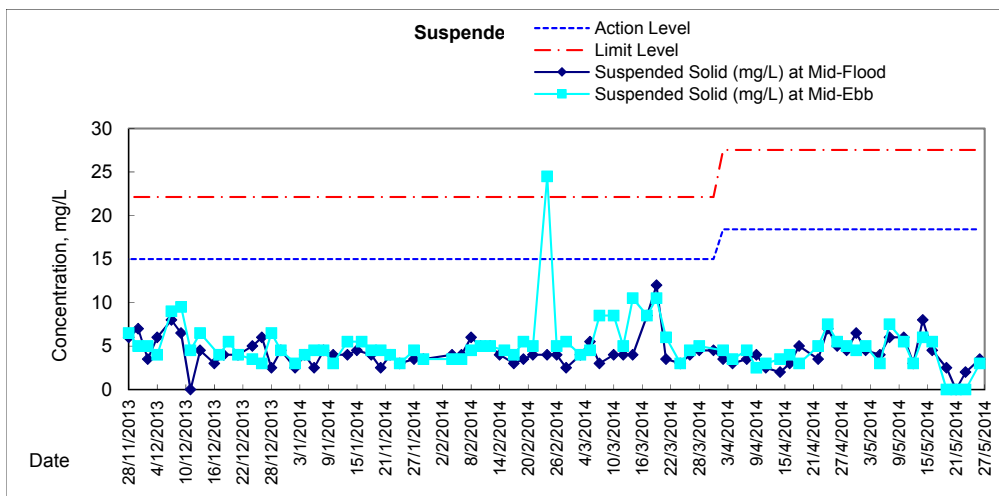
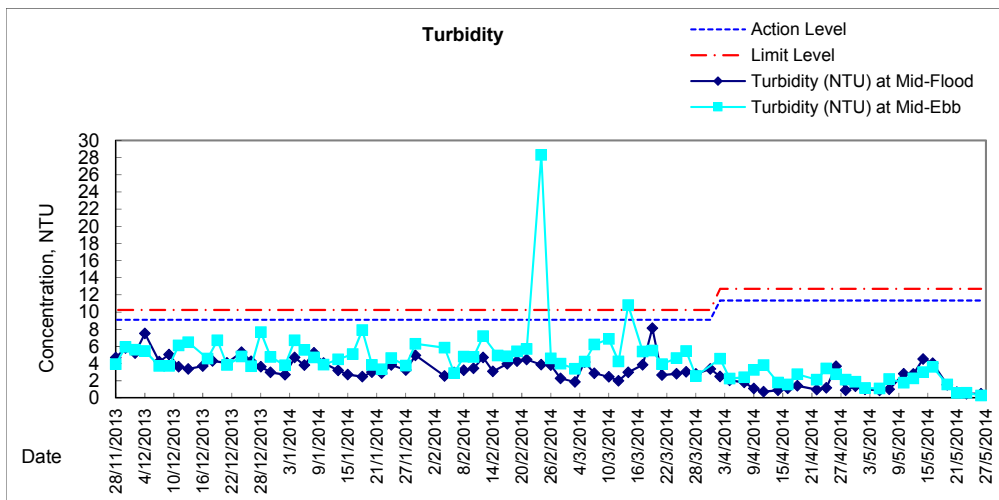
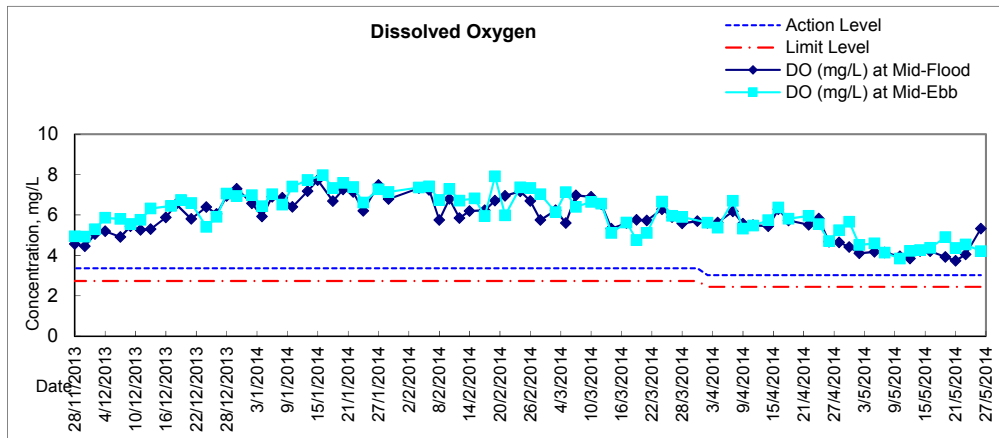


Graphic Presentation of Water Quality Result of C1 - HKCEC



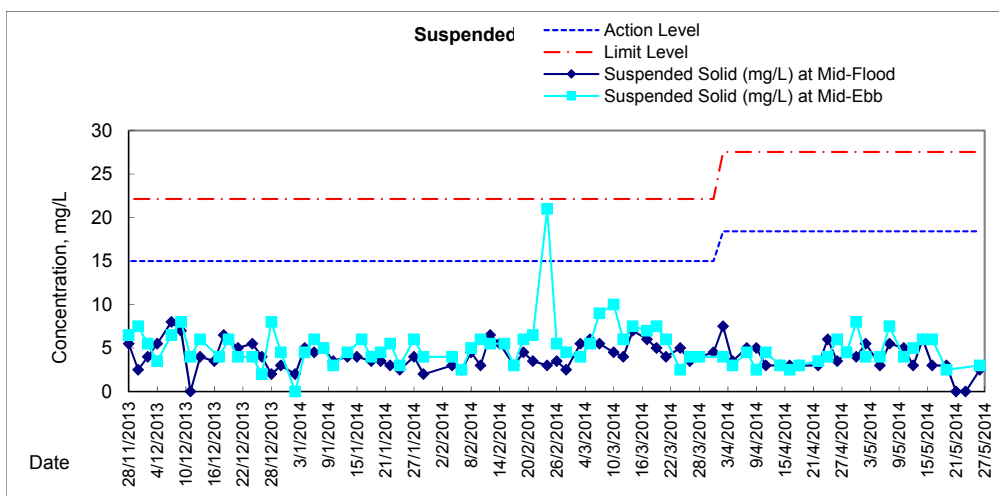
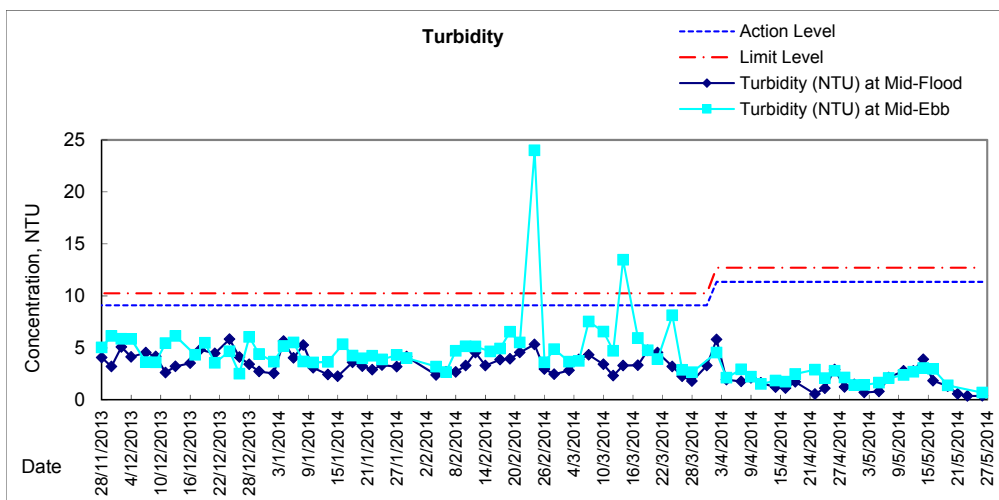
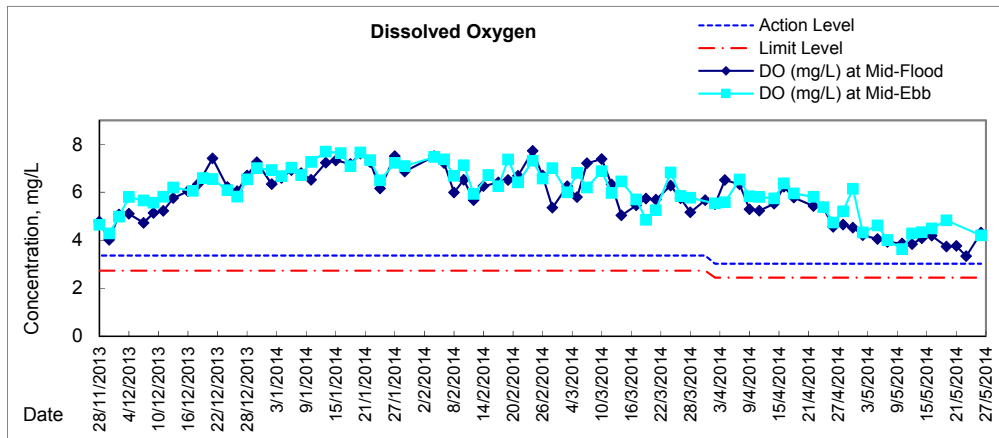


Graphic Presentation of Water Quality Result of P1 - HKCEC Phase I



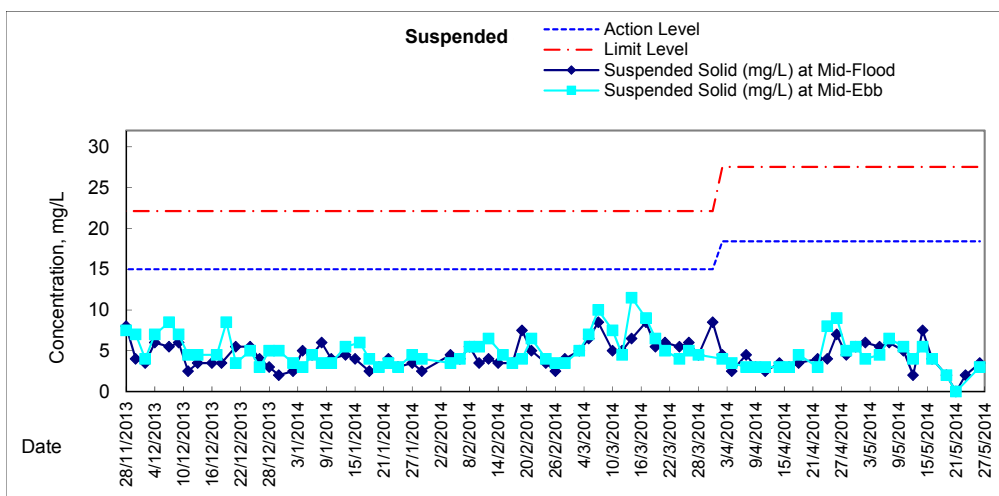
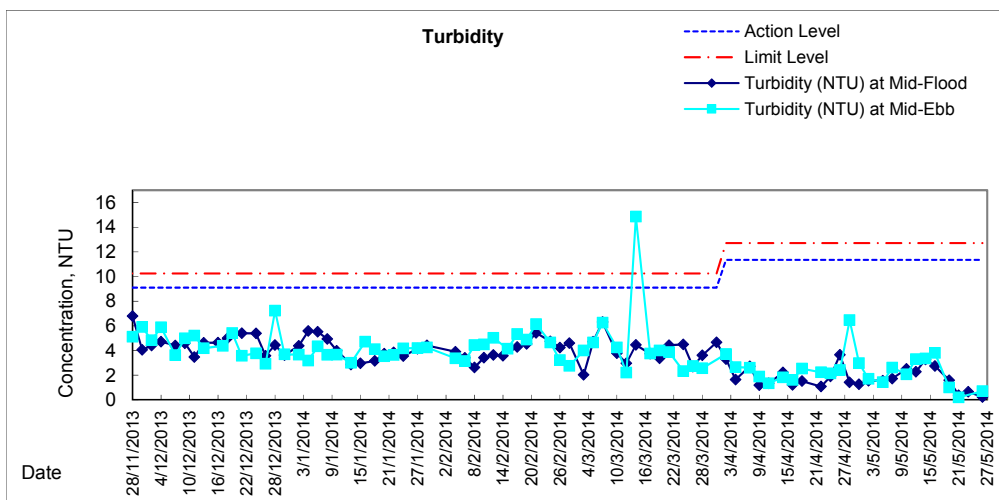
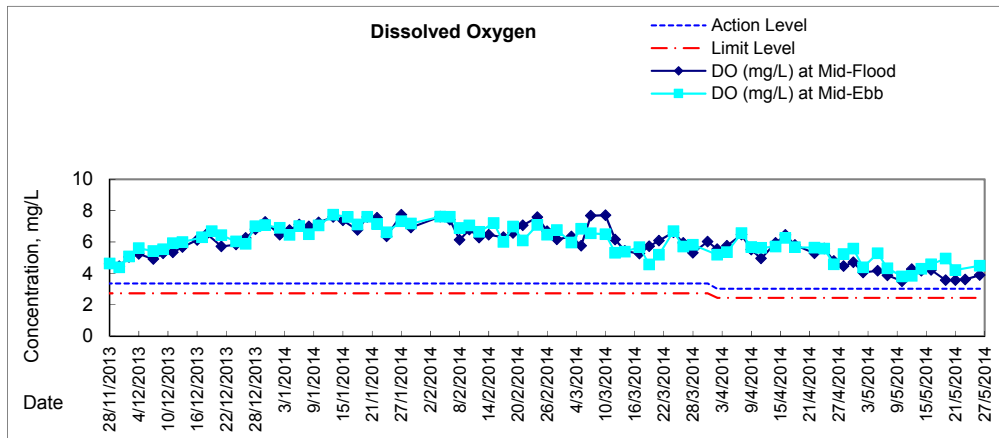


Graphic Presentation of Water Quality Result of P3 - APA



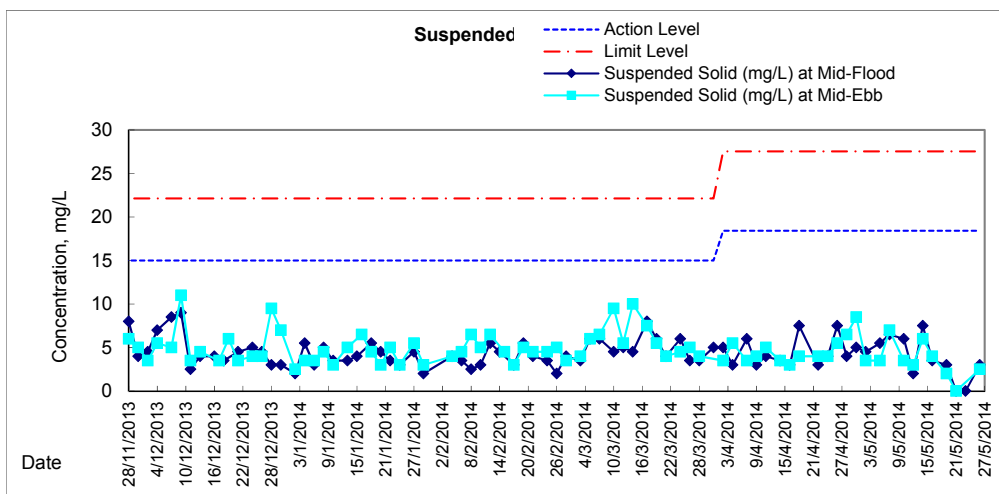
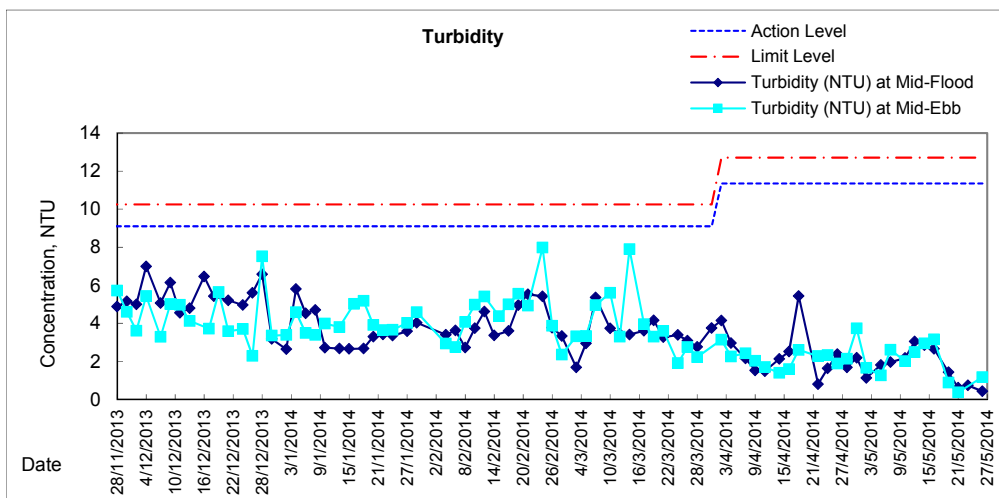
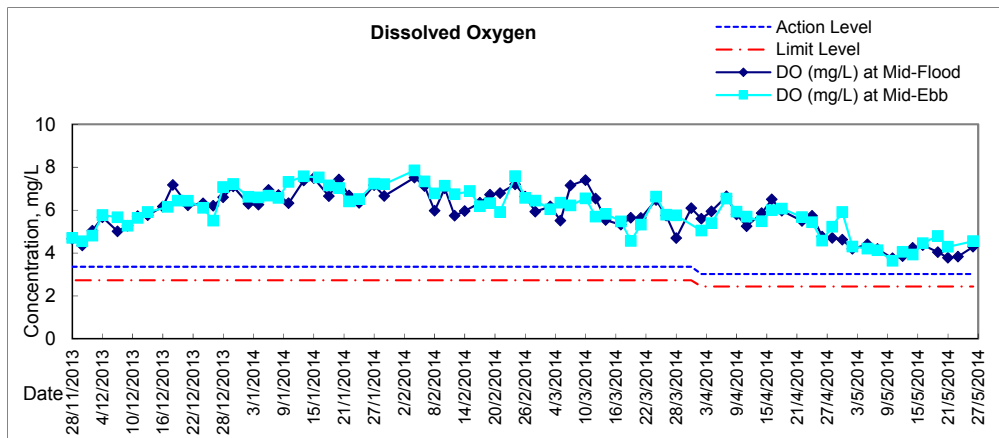


Graphic Presentation of Water Quality Result of P5 - WCT / RT / IT



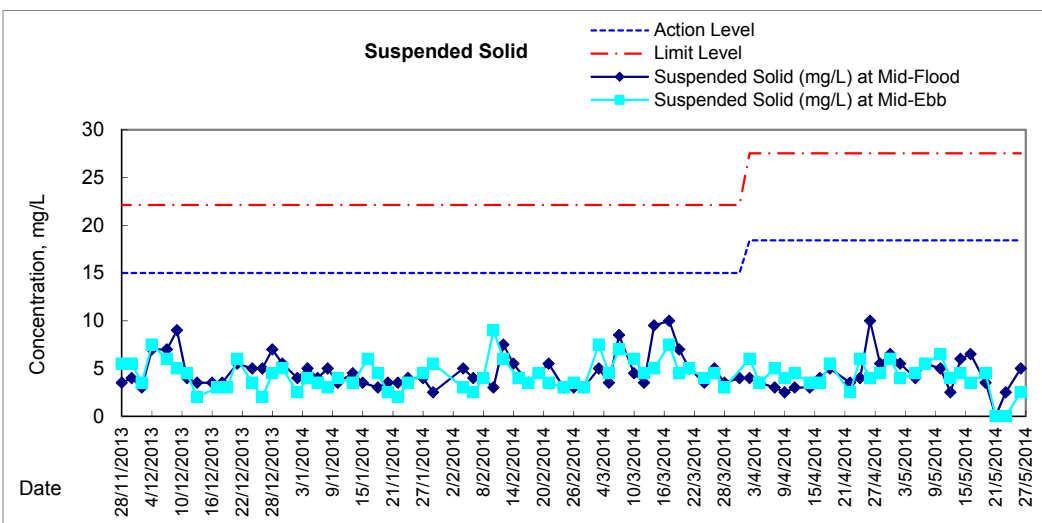
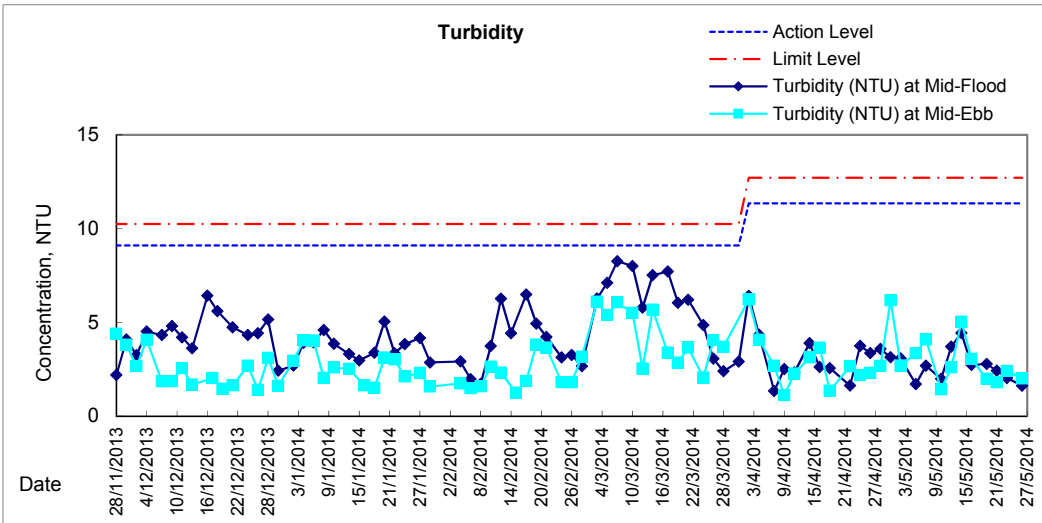
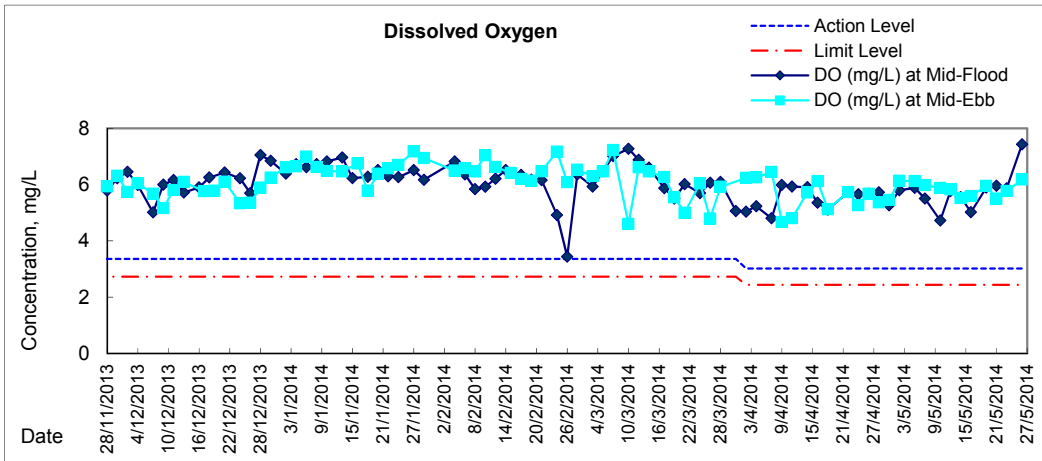


Graphic Presentation of Water Quality Result of P4 - SOC



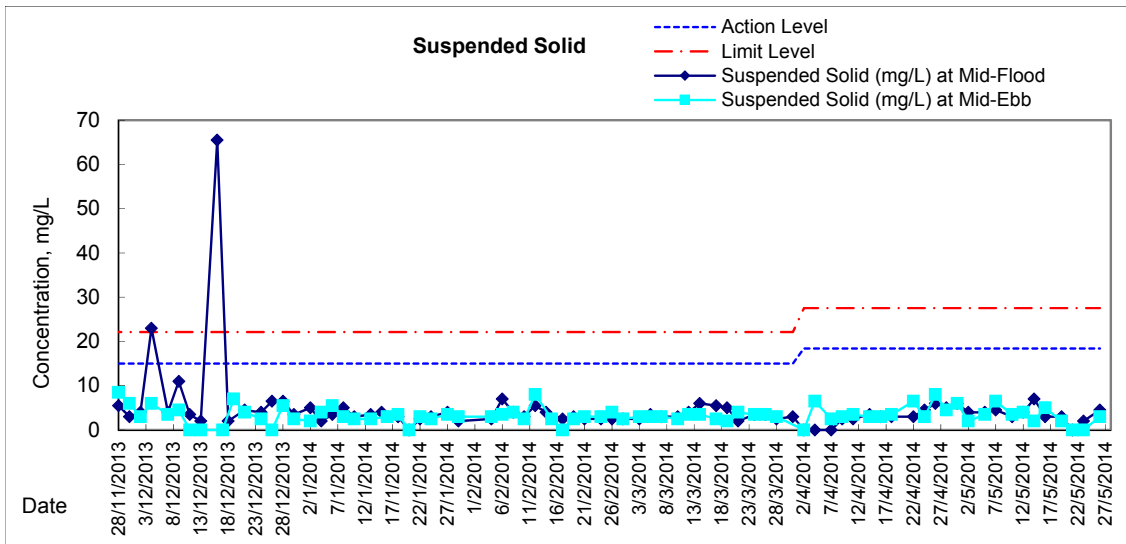
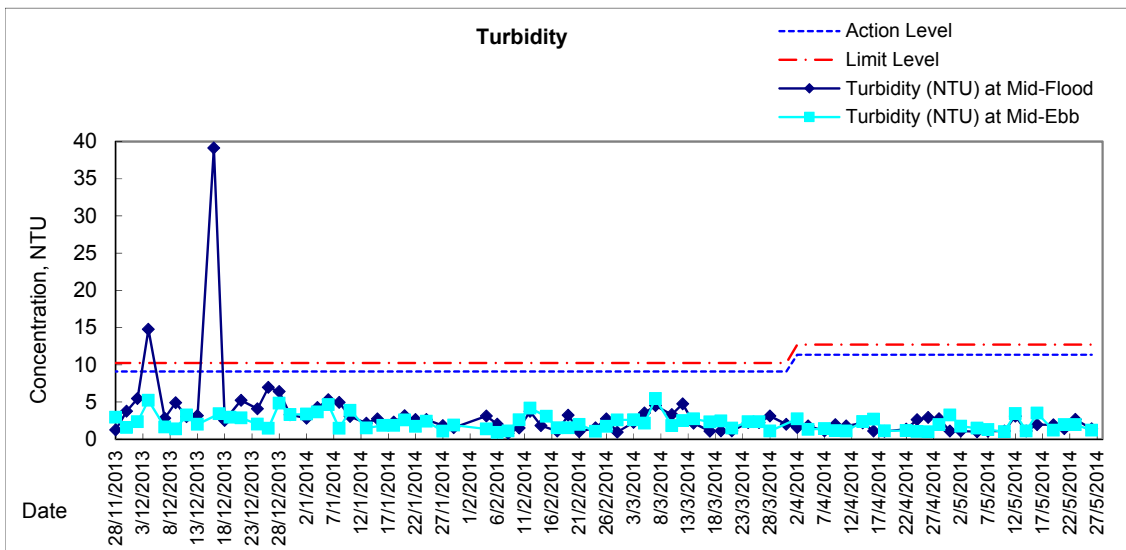
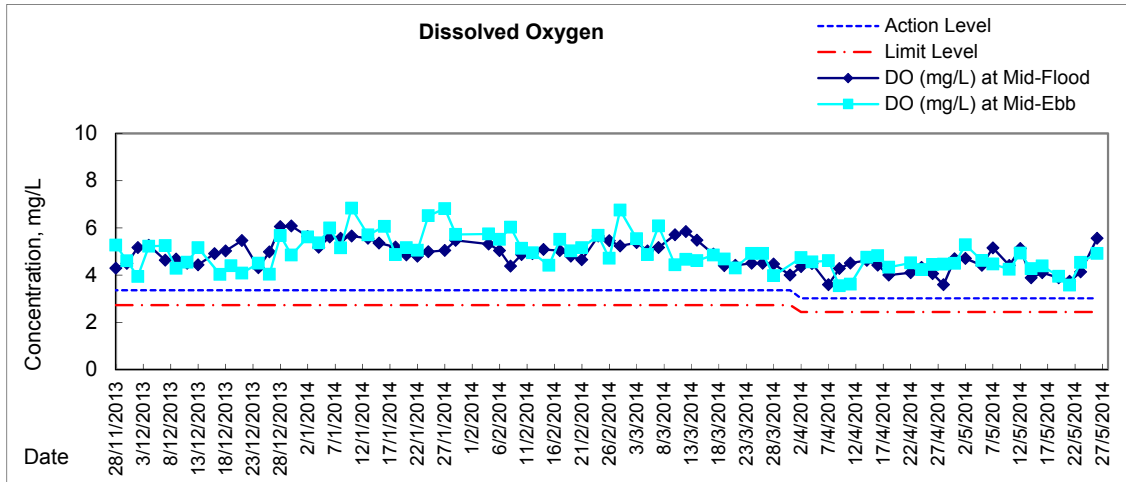


Graphic Presentation of Water Quality Result of RW21-P789 - GEC/CRC/SHK



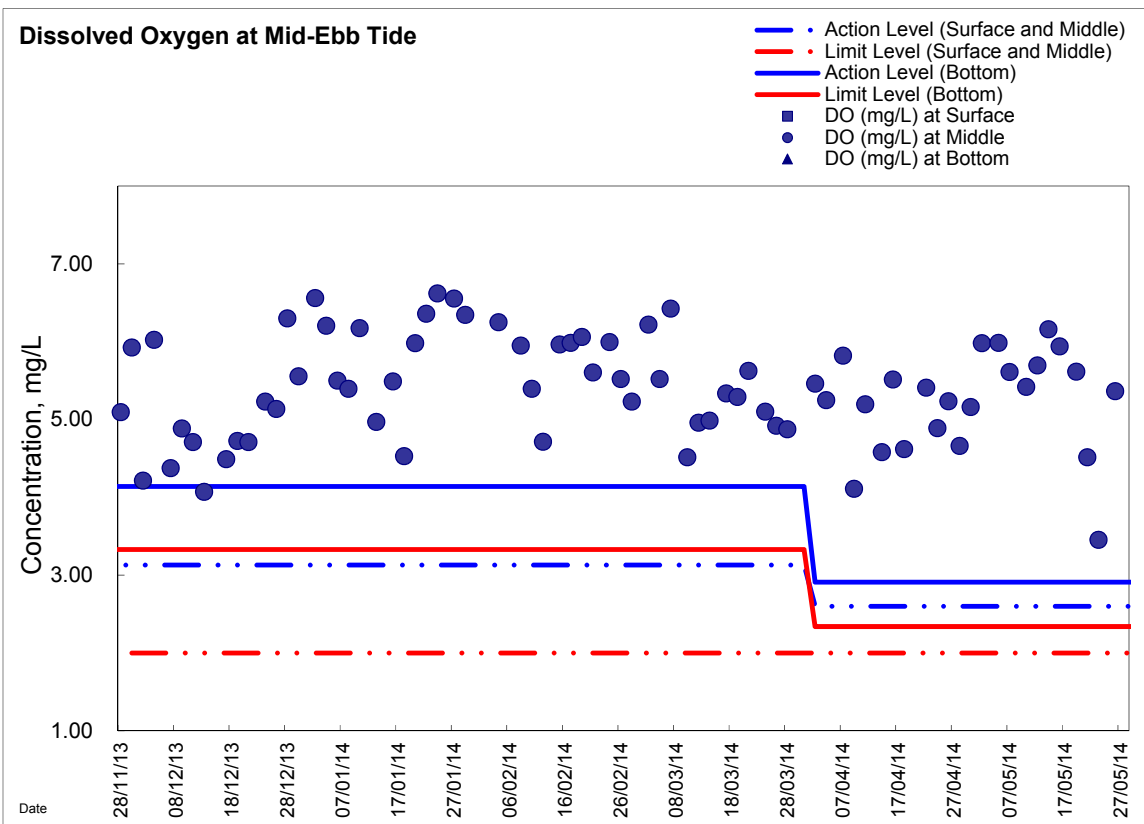
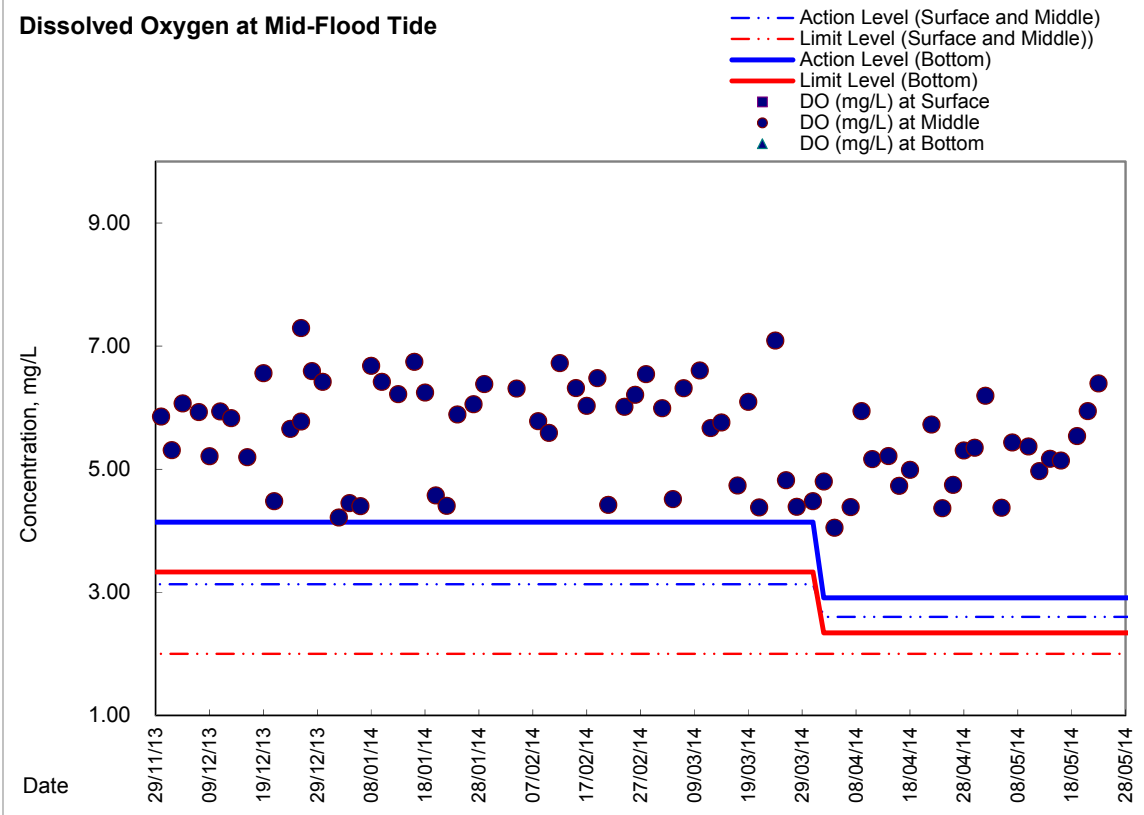


Graphic Presentation of Water Quality Result of C7 - Windsor House



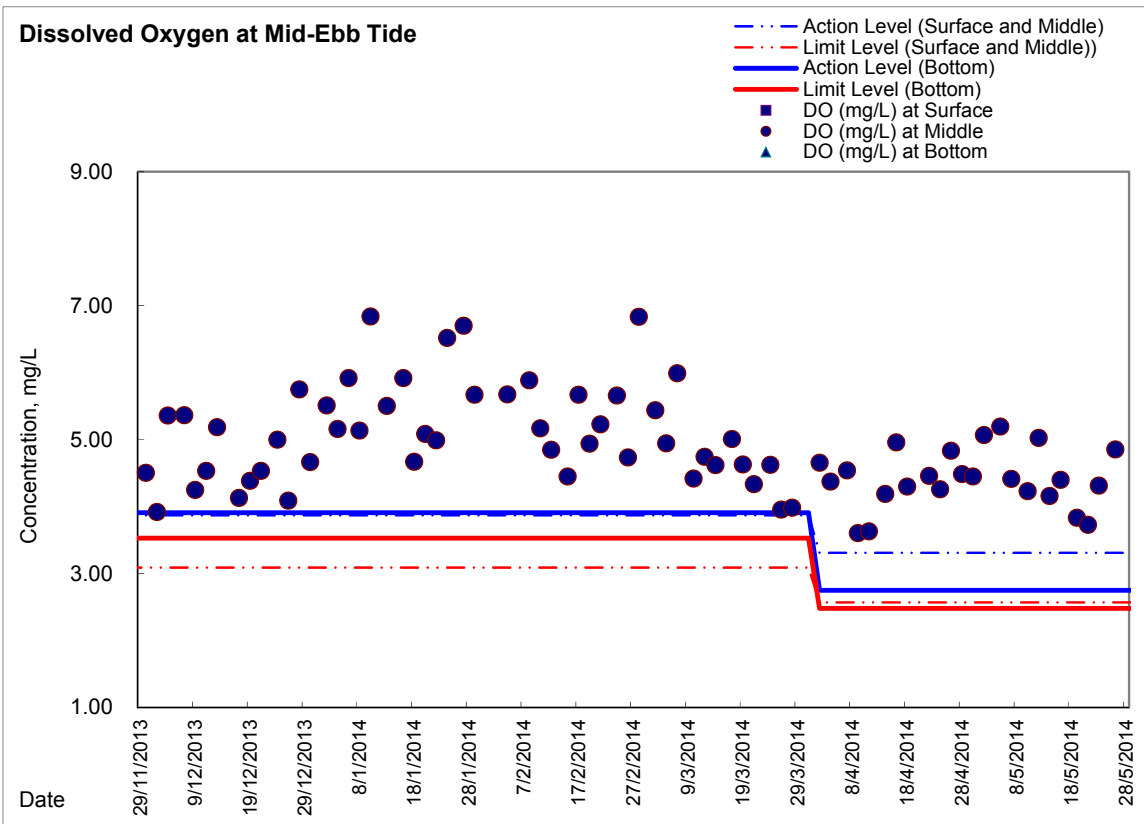
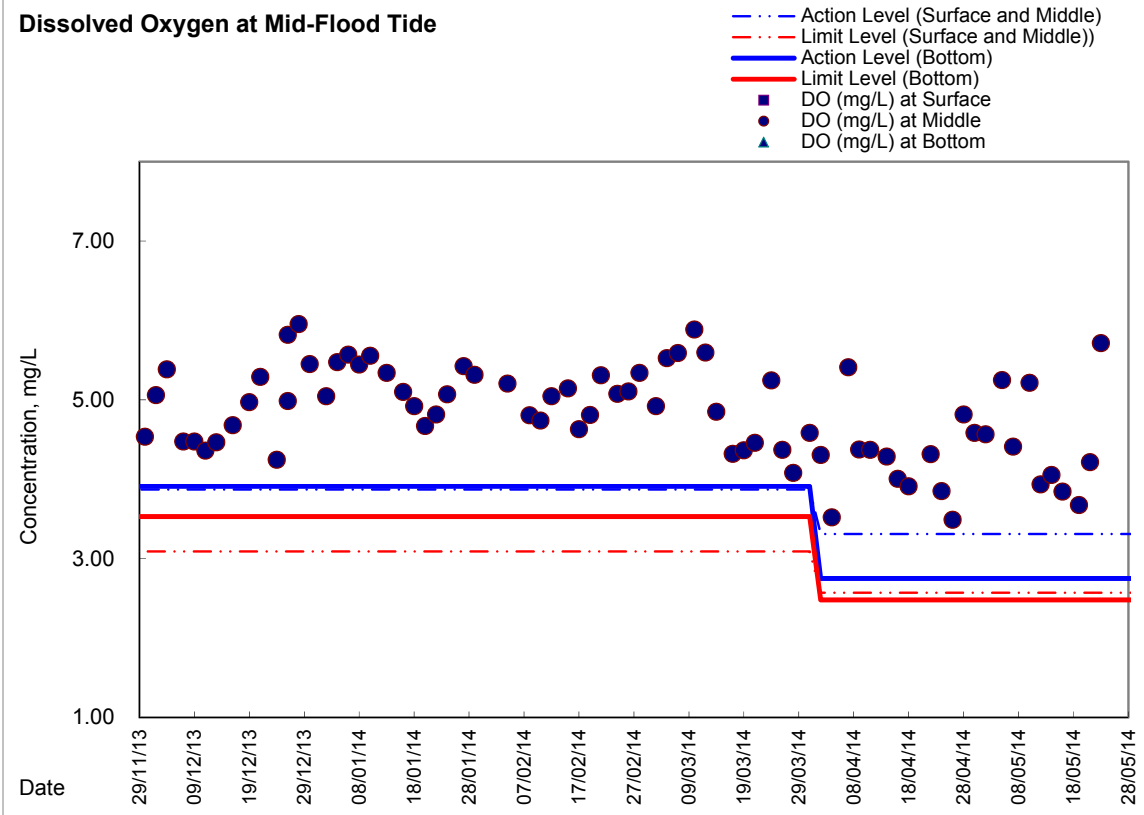


Graphic Presentation of Enhanced Water Monitoring Results (DO) at C6 - Excelsior Hotel



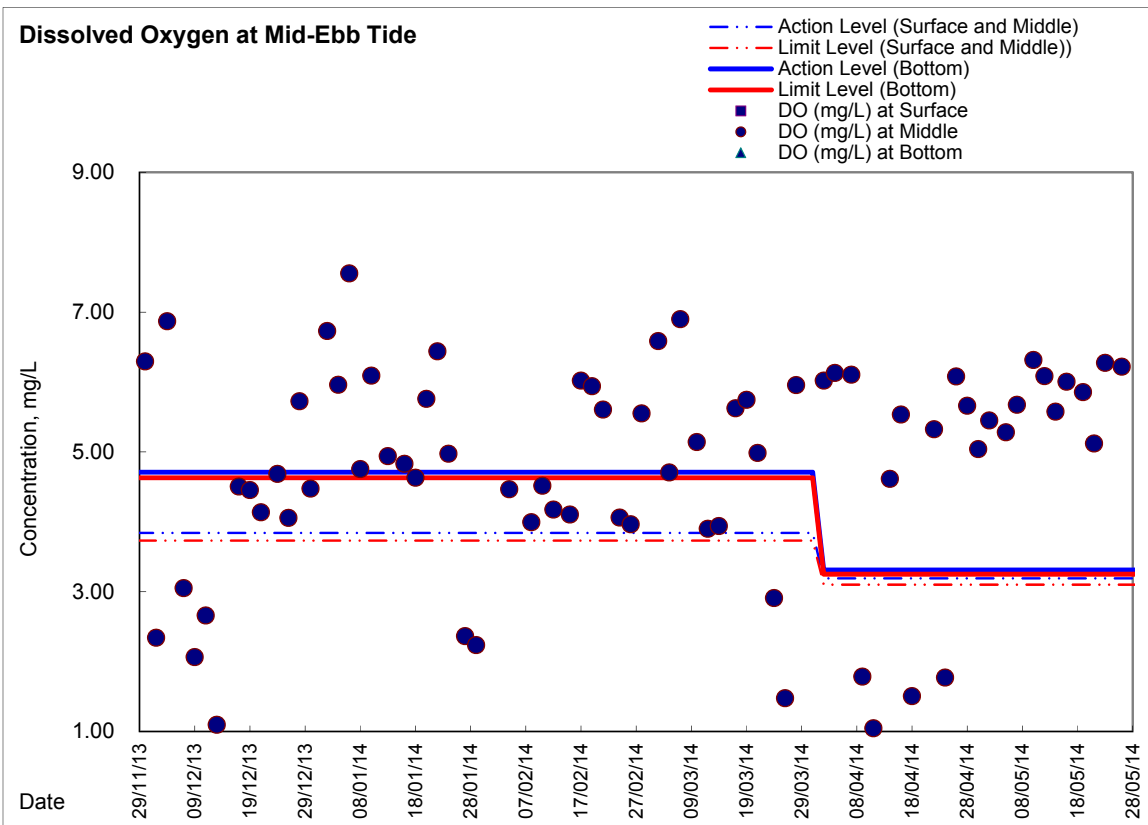
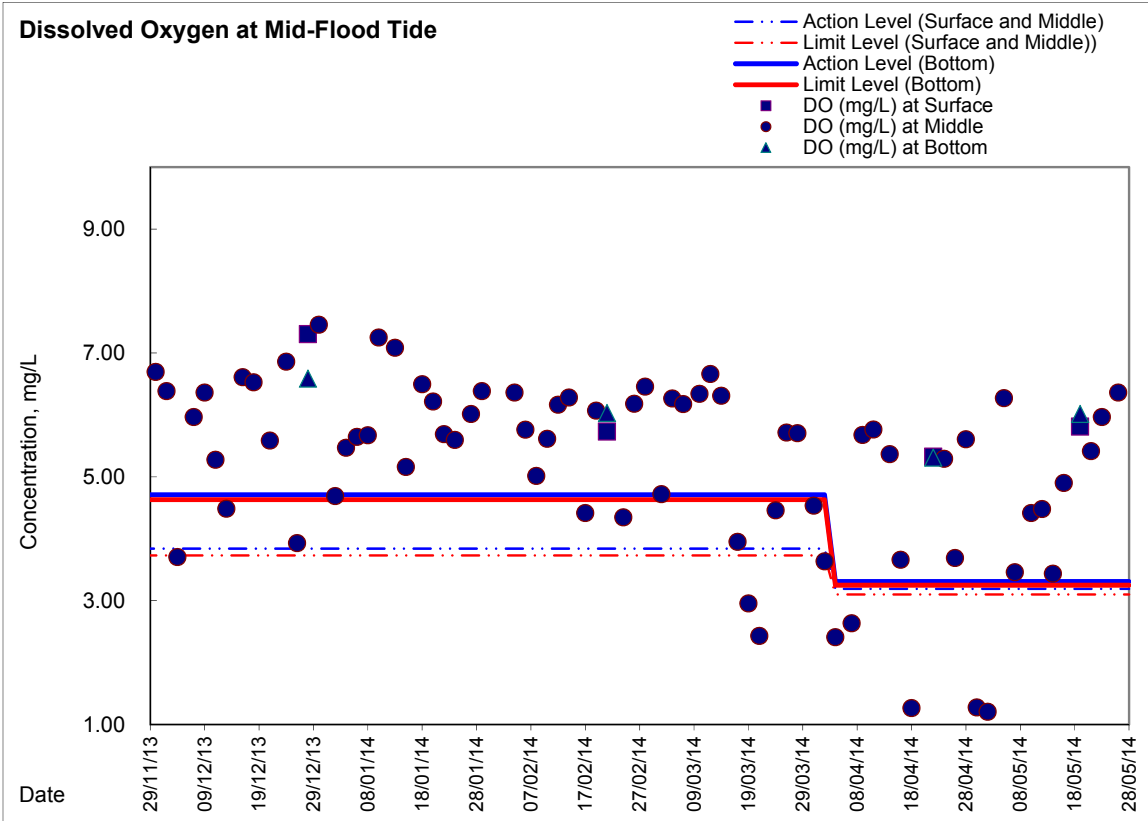


Graphic Presentation of Enhanced Water Monitoring Results (DO) at C7 - Windsor House





Graphic Presentation of Enhanced Water Monitoring Results (DO) at Ex-WPCWA SW - South-western corners of ex-Public Cargo Works Area





Graphic Presentation of Enhanced Water Monitoring Results (DO) at Ex-WPCWA SE - South-eastern corners of ex-Public Cargo Works Area

